



FAQ

Frequently Asked Questions

1 WHAT IS TICKET TO WORK?

Ticket to Work is a national initiative that supports young people with disability to transition from school to open employment.

2 WHY IS TICKET TO WORK NEEDED?

Young Australians with disability have the potential to succeed in work and become valuable members of the workforce. There are over 2.8 million young people with disability in Australia – a severely underrepresented group in our workforce. Many young people with disability face limiting stereotypes and a pervasive culture of low expectations around employment. This leads to lost opportunities. Young people with disability who have a coordinated, supported transition from school to work, including meaningful work experience and opportunities while at school, are much more likely to earn real wages and enjoy independent lives after school.

3 HOW DOES IT WORK?

Ticket to Work puts the needs of the young person at the centre of everything we do. Local Ticket to Work networks across Australia work with individual young people, their schools and their families to tailor a combination of work-focused curriculum, work experience, School-Based Apprenticeships and Traineeships (SBATs).

4 WHAT ARE THE BENEFITS OF TICKET TO WORK FOR YOUNG PEOPLE?

Ticket to Work supports young people to gain valuable skills, knowledge and exposure to the world of work while in the supportive environment of school.

Ticket to Work participants are four times more likely to be in open employment after school and 50 per cent more likely to finish secondary school than those who did not participate in Ticket to Work.

When asked about how Ticket to Work helped them, two young people said:

"Ticket to work helped me find a job. I benefited a lot from that because my employer liked my work and I learned a lot from him"

"Ticket to work has helped me achieve my goals such as saving for a house, insurance and other goals. It is helping me be set up for life."



5 WHICH YOUNG PEOPLE ARE ELIGIBLE TO PARTICIPATE IN TICKET TO WORK AND HOW DO THEY APPLY?

For a young person to be eligible for Ticket to Work, they must be a current high school student with disability recognised by the state education department, have an open employment goal, and be committed to working towards achieving that goal. Eligible young people should speak with their school or contact their local Ticket to Work network to learn more about how to apply.

6 DOES IT COST ANYTHING FOR YOUNG PEOPLE TO PARTICIPATE IN TICKET TO WORK?

No, Ticket to Work is free of charge. As Ticket to Work promotes a partnership approach, young people and their families are engaged as active contributors to their journeys toward open employment.

7 WHERE IS TICKET TO WORK OPERATING?

Ticket to Work has grown exponentially since it began in 2012 and has networks in every state and territory in Australia. While the number of networks is always growing, they don't currently cover all regions. Visit our website at tickettowork.org.au for more information on our locations.

8 WHO IS INVOLVED IN THE TICKET TO WORK NETWORKS?

Local Ticket to Work networks are made up of organisations and agencies who are committed to improving employment outcomes for young people with disability. The networks include schools, employment services, post school providers and employers, all working in collaboration to create seamless pathways from school to work.





9 HOW CAN AN ORGANISATION GET INVOLVED IN TICKET TO WORK?

We welcome enquiries from organisations that are interested in delivering Ticket to Work. For information about joining a local network or setting up a new network in an area currently not covered, visit the Ticket to Work website.

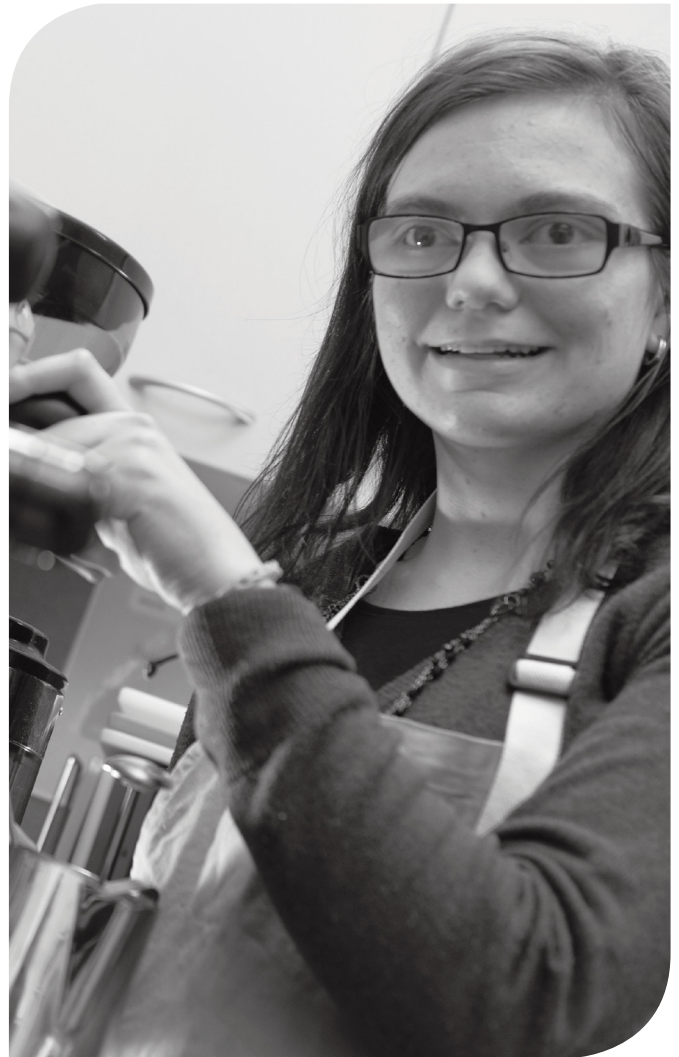
10 HOW CAN EMPLOYERS BECOME INVOLVED IN TICKET TO WORK?

Ticket to Work employers speak positively about the benefits of having a young person with disability contribute to the workplace for both productivity and morale. Over 90 per cent of employers involved in Ticket to Work stated that they would recommend other employers get involved in Ticket to Work.

One employer said,

"You'd be crazy not to offer opportunities to young people with disability! There is so much energy and they are motivated, so that creates a positive energy. You can utilise their motivation to the business's advantage!"

Ticket to Work is always in need of employers to provide workplace opportunities for participants. We are seeking enthusiastic employers who are willing to learn and support these motivated young people.



WHERE CAN I GO FOR MORE INFORMATION?

For more information, visit the website at www.tickettowork.org.au. You can also contact the national office or your local network via the website for further information.

NATIONAL TICKET TO WORK CONTACT DETAILS:

MICHELLE WAKEFORD

National Ticket to Work Manager

0413 750 745

michelle@tickettowork.org.au